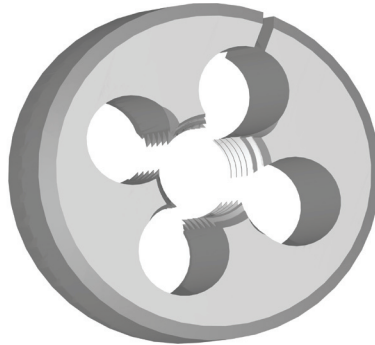
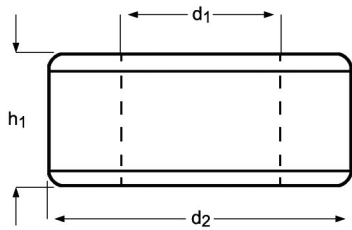


F320

DORMER

- Adjustable Dies
- Schneideisen, einstellbar
- Verstelbare snijplaten
- Filières extensibles
- Terraja tipo abierto
- Caçonetes Ajustáveis



F320



- 1.1 1.2 1.3 3.1 3.2 3.3 7.1 7.2 7.3
- 1.4 2.1 2.2 3.4 4.3 5.1 5.2 5.3 6.1 6.2 6.3 7.4 8.1 8.2 8.3

UNC	TPI	d ₁ nom mm	d ₂ Ø Inch /	h1 Inch	e-Code	UNC	TPI	d ₁ nom mm	d ₂ Ø Inch /	h1 Inch	e-Code
2	56	2,18	13/16	1/4	F3202-56X13/16	3/8	16	9,53	1.5/16	7/16	F3203/8X1.5/16
4	40	2,85	13/16	1/4	F3204-40X13/16	3/8	16	9,53	1.1/2	1/2	F3203/8X1.1/2
5	40	3,18	13/16	1/4	F3205-40X13/16	7/16	14	11,11	1.5/16	7/16	F3207/16X1.5/16
6	32	3,51	13/16	1/4	F3206-32X13/16	7/16	14	11,11	1.1/2	1/2	F3207/16X1.1/2
8	32	4,17	13/16	1/4	F3208-32X13/16	1/2	13	12,70	1.5/16	7/16	F3201/2X1.5/16
8	32	4,17	1.	3/8	F3208-32X1	1/2	13	12,70	1.1/2	1/2	F3201/2X1.1/2
10	24	4,83	13/16	1/4	F32010-24X13/16	1/2	13	12,70	2.	5/8	F3201/2X2
10	24	4,83	1.	3/8	F32010-24X1	9/16	12	14,29	1.1/2	1/2	F3209/16X1.1/2
12	24	5,49	13/16	1/4	F32012-24X13/16	5/8	11	15,88	1.1/2	1/2	F3205/8X1.1/2
1/4	20	6,35	13/16	1/4	F3201/4X13/16	5/8	11	15,88	2.	5/8	F3205/8X2
1/4	20	6,35	1.	3/8	F3201/4X1	3/4	10	19,05	1.1/2	1/2	F3203/4X1.1/2
1/4	20	6,35	1.5/16	7/16	F3201/4X1.5/16	3/4	10	19,05	2.	5/8	F3203/4X2
1/4	20	6,35	1.1/2	1/2	F3201/4X1.1/2	7/8	9	22,23	2.	5/8	F3207/8X2
5/16	18	7,94	1.	3/8	F3205/16X1	1.	8	25,40	2.	5/8	F3201X2
5/16	18	7,94	1.1/2	1/2	F3205/16X1.1/2	1.1/8	7	28,58	3.	7/8	F3201.1/8X3
3/8	16	9,53	1.	3/8	F3203/8X1	1.1/4	7	31,75	3.	7/8	F3201.1/4X3