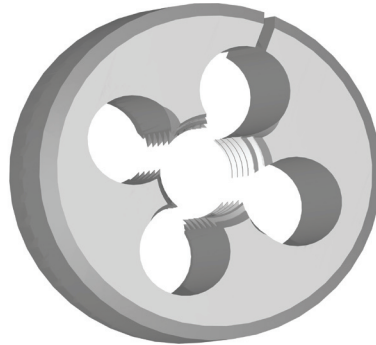
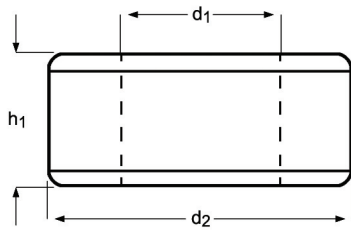


F300

DORMER

- Adjustable Dies
- Schneideisen, einstellbar
- Verstelbare snijplaten
- Filières extensibles
- Terraja tipo abierto
- Caçonetes Ajustáveis



F300



- 1.1 1.2 1.3 3.1 3.2 3.3 7.1 7.2 7.3
- 1.4 2.1 2.2 3.4 4.3 5.1 5.2 5.3 6.1 6.2 6.3 7.4 8.1 8.2 8.3

M	P mm	d_2 Ø Inch /	h_1 Inch	e-Code	M	P mm	d_2 Ø Inch /	h_1 Inch	e-Code
1,6	0,35	13/16	1/4	F300M1.6X13/16	10	1,50	1.5/16	7/16	F300M10X1.5/16
2	0,40	13/16	1/4	F300M2X13/16	10	1,50	1.1/2	1/2	F300M10X1.1/2
2,5	0,45	13/16	1/4	F300M2.5X13/16	11	1,50	1.5/16	7/16	F300M11X1.5/16
3	0,50	13/16	1/4	F300M3X13/16	12	1,75	1.5/16	7/16	F300M12X1.5/16
3,5	0,60	13/16	1/4	F300M3.5X13/16	12	1,75	1.1/2	1/2	F300M12X1.1/2
4	0,70	13/16	1/4	F300M4X13/16	14	2,00	1.5/16	7/16	F300M14X1.5/16
5	0,80	13/16	1/4	F300M5X13/16	14	2,00	1.1/2	1/2	F300M14X1.1/2
5	0,80	1	3/8	F300M5X1	16	2,00	1.1/2	1/2	F300M16X1.1/2
6	1,00	13/16	1/4	F300M6X13/16	16	2,00	2	5/8	F300M16X2
6	1,00	1	3/8	F300M6X1	18	2,50	1.1/2	1/2	F300M18X1.1/2
6	1,00	1.5/16	7/16	F300M6X1.5/16	18	2,50	2	5/8	F300M18X2
7	1,00	13/16	1/4	F300M7X13/16	20	2,50	1.1/2	1/2	F300M20X1.1/2
7	1,00	1	3/8	F300M7X1	20	2,50	2	5/8	F300M20X2
8	1,25	1	3/8	F300M8X1	22	2,50	2	5/8	F300M22X2
8	1,25	1.5/16	7/16	F300M8X1.5/16	24	3,00	2	5/8	F300M24X2
9	1,25	1	3/8	F300M9X1	27	3,00	3	7/8	F300M27X3
9	1,25	1.5/16	7/16	F300M9X1.5/16	30	3,50	3	7/8	F300M30X3
10	1,50	1	3/8	F300M10X1	36	4,00	3	7/8	F300M36X3