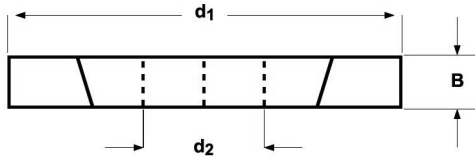


D763

DORMER

- Metal slitting saws
- Metallkreissägeblätter
- Metaalzagen
- Fraises scies
- Sierras de ranurar o tronzar
- Serras Circulares p/ Abertura de Rasgos



D763



N

HSCo

DIN

885 A



js16

λ

15°

- 1.1 1.2 1.3 1.4 1.5 1.6 2.1 2.2 2.3 3.1 3.2 3.3 3.4 4.1 4.2 4.3 5.1 5.2 5.3 6.1
6.2 6.3 6.4 7.1 7.2 7.3 7.4 8.1

| d ₁ Ø mm | B | d ₂ Ø mm | z | e-Code | d ₁ Ø mm | B | d ₂ Ø mm | z | e-Code |
|---------------------------|-----|---------------------------|----|---------------|---------------------------|-----|---------------------------|----|---------------|
| 63 | 1,6 | 22 | 32 | D76363.0X1.6 | 100 | 2,5 | 32 | 44 | D763100.0X2.5 |
| 63 | 2,0 | 22 | 32 | D76363.0X2.0 | 100 | 3,0 | 32 | 40 | D763100.0X3.0 |
| 63 | 2,5 | 22 | 32 | D76363.0X2.5 | 100 | 3,5 | 32 | 40 | D763100.0X3.5 |
| 63 | 3,0 | 22 | 28 | D76363.0X3.0 | 125 | 2,0 | 32 | 44 | D763125.0X2.0 |
| 63 | 3,5 | 22 | 28 | D76363.0X3.5 | 125 | 2,5 | 32 | 44 | D763125.0X2.5 |
| 80 | 2,0 | 27 | 36 | D76380.0X2.0 | 125 | 3,0 | 32 | 44 | D763125.0X3.0 |
| 80 | 2,5 | 27 | 36 | D76380.0X2.5 | 125 | 3,5 | 32 | 40 | D763125.0X3.5 |
| 80 | 3,0 | 27 | 32 | D76380.0X3.0 | 125 | 4,0 | 32 | 40 | D763125.0X4.0 |
| 80 | 3,5 | 27 | 32 | D76380.0X3.5 | | | | | |
| 100 | 2,0 | 32 | 44 | D763100.0X2.0 | | | | | |