

• Metal slitting saws

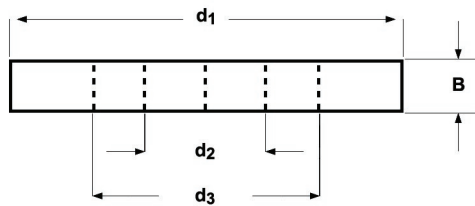
• Metallkreissägeblätter

• Metaalzaggen

• Fraises scies

• Sierras de ranurar o tronzar

• Serras Circulares p/ Abertura de Rasgos

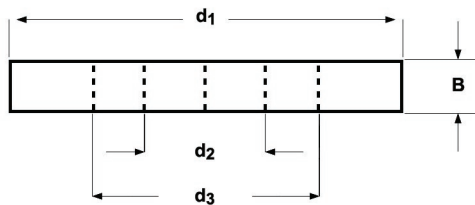


D752



■ 1.1 1.2 1.3 2.1 3.1 3.2 3.3 4.1 4.2 5.1 5.2 6.1 6.2 6.3 7.1 7.2 7.3 8.1

d_1 Ø mm	B	d_2 Ø mm	z	P mm	d_3 Ø mm	e-Code	d_1 Ø mm	B	d_2 Ø mm	z	P mm	d_3 Ø mm	e-Code
200	1,8	32	80	8	95	D752200.0X1.8X80	300	2,5	32	160	6	105	D752300.0X2.5X160
200	1,8	32	100	6	95	D752200.0X1.8X100	315	2,5	32	160	6	105	D752315.0X2.5X160
225	2,0	32	90	8	95	D752225.0X2.0X90	350	2,5	32	180	6	110	D752350.0X2.5X180
225	2,0	32	120	6	95	D752225.0X2.0X120							
250	2,0	32	128	6	95	D752250.0X2.0X128							
275	2,5	32	110	8	105	D752275.0X2.5X110							



D753



■ 1.1 1.2 1.3 2.1 3.1 3.2 3.3 4.1 4.2 5.1 5.2 6.1 6.2 6.3 7.1 7.2 7.3 8.1

d_1 Ø mm	B	d_2 Ø mm	z	P mm	d_3 Ø mm	e-Code	d_1 Ø mm	B	d_2 Ø mm	z	P mm	d_3 Ø mm	e-Code
250	2,0	32	100	8	95	D753250.0X2.0	315	2,5	32	120	8	105	D753315.0X2.5
300	2,5	32	120	8	105	D753300.0X2.5	350	2,5	32	140	8	110	D753350.0X2.5