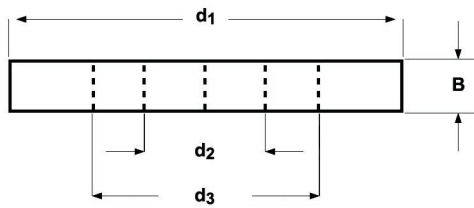


D750 - D751

DORMER

- Metal slitting saws
- Metallkreissägeblätter
- Metaalzagen
- Fraises scies
- Sierras de ranurar o tronzar
- Serras Circulares p/ Abertura de Rasgos

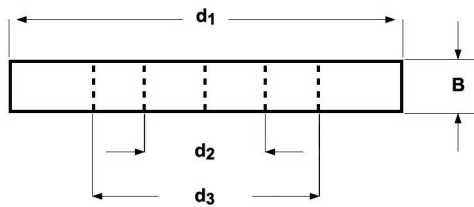


D750



■ 1.1 1.2 1.3 2.1 3.1 3.2 3.3 4.1 4.2 5.1 5.2 6.1 6.2 6.3 7.1 7.2 7.3 8.1

d_1 Ø mm	B	d_2 Ø mm	z	P mm	d_3 Ø mm	e-Code	d_1 Ø mm	B	d_2 Ø mm	z	P mm	d_3 Ø mm	e-Code
200	1,8	32	128	5	95	D750200.0X1.8	300	2,5	32	180	5	105	D750300.0X2.5
225	2,0	32	140	5	95	D750225.0X2.0	315	2,5	32	200	5	105	D750315.0X2.5
250	2,0	32	160	5	95	D750250.0X2.0	350	2,5	32	220	5	110	D750350.0X2.5
275	2,5	32	180	5	105	D750275.0X2.5							



D751



■ 1.1 1.2 1.3 2.1 3.1 3.2 3.3 4.1 4.2 5.1 5.2 6.1 6.2 6.3 7.1 7.2 7.3 8.1

d_1 Ø mm	B	d_2 Ø mm	z	P mm	d_3 Ø mm	e-Code	d_1 Ø mm	B	d_2 Ø mm	z	P mm	d_3 Ø mm	e-Code
200	1,8	32	160	4	95	D751200.0X1.8X160	300	2,5	32	220	4	105	D751300.0X2.5X220
200	1,8	32	200	3	95	D751200.0X1.8X200	300	2,5	32	300	3	105	D751300.0X2.5X300
225	2,0	32	180	4	95	D751225.0X2.0X180	315	2,5	32	240	4	105	D751315.0X2.5X240
225	2,0	32	220	3	95	D751225.0X2.0X220	315	2,5	32	320	3	105	D751315.0X2.5X320
250	2,0	32	200	4	95	D751250.0X2.0X200	350	2,5	32	280	4	110	D751350.0X2.5X280
250	2,0	32	250	3	95	D751250.0X2.0X250	350	2,5	32	350	3	110	D751350.0X2.5X350
275	2,5	32	220	4	105	D751275.0X2.5X220							
275	2,5	32	280	3	105	D751275.0X2.5X280							